

Pathway for Private Practice Midwives (including birth in the home)

REGISTRATION

Requirements from Nursing and Midwifery Board of Australia - including Section 284 exemption to National Regulation Law

ACTS

Nursing & Midwifery

Privacy

Occupational Health & Safety

Discrimination

Poisons & Dangerous Drugs

Crimes

Coroners

Domestic Violence

(Family Protection)

Registration of Births, Death & Marriages

Local Government

Perinatal Data

Midwifery Professional Indemnity legislation

Health Insurance Act

PROFESSIONAL GUIDANCE

ACM Philosophy Statement

ANMC Competency standards

ANMC Code of Ethics

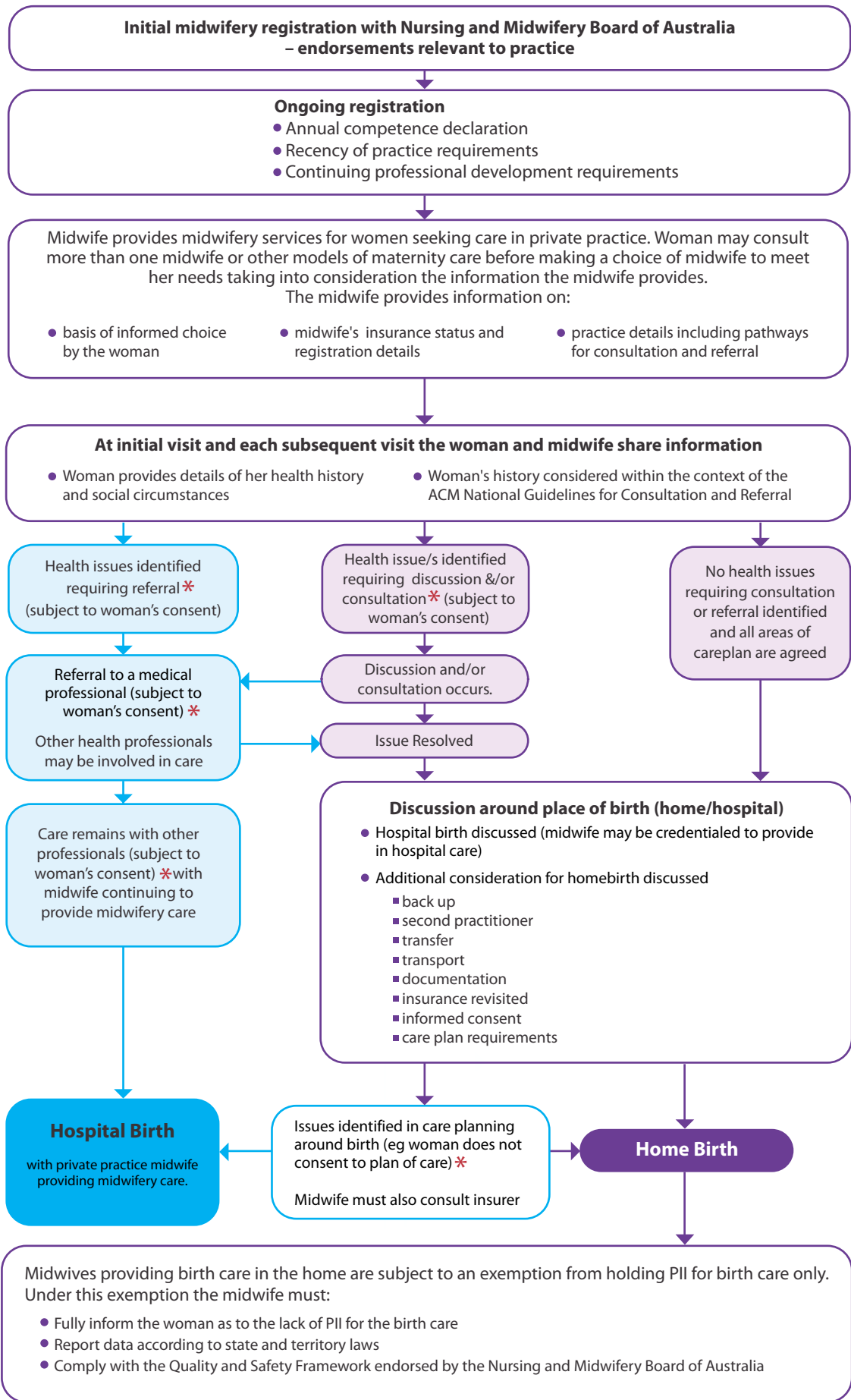
ANMC Code of Professional Conduct

CONTINUING PROFESSIONAL DEVELOPMENT

ACM MidPLUS

ACM Midwifery Practice Review (MPR)

Other professional development programs



* Appendix A in the ACM National Midwifery Guidelines for Consultation and Referral provide guidance for the midwife when women choose not to accept recommendations regarding her care or decline consultation or referral. In the event of a woman making her own decision/s the ACM National Midwifery Guidelines for Consultation and Referral are designed to assist the midwife with a reasonable process, while recognising both the woman's right to informed choice and the midwife's duty of care.